

1000-MILE DOUBLEHANDED RACE

IJmuiden-Bergen-Lerwick-Bergen

14th June 2017

www.1000mile.com

Organising authorities

- Race Committee 1000-Mile Doublehanded Race (race@1000mile.com)
- Bergen- Shetland Races 2017, Shetland and Norway (shetland-race.no)
- Bergens Seilforening
- Askøy Seilforening, Norway (askoy-seilforening.no)
- In association with Foundation SHORTHANDED.NL

Objective and concept

The event is intended to promote all aspects of sailing with doublehanded crews and to provide a qualifier and a stepping stone for long-distance shorthanded races. The race consists of 3 legs.

Contact & Race Offices

'Mobile Race Office' near the berthing area in Seaport Marina, IJmuiden

Askøy Sailing Club, Askøy

Bergens Seilforening, Hjellevadveien 247, Hjellevad

Lerwick: Lerwick Boating Club, 12a Commercial Street, Lerwick. The Service Office (for information about the berths, facilities, programme, etc) is on Victoria Pier.

General 1000-Mile Doublehanded Race telephone number: **+31 6 19 05 67 66**

IMPORTANT NOTE: This number is neither for safety nor distress purposes, but exclusively to contact the Race Committee. In case of emergency the regular procedure to contact Coastguard and rescue services shall be used.

Sailing Instructions v1.1

1 Rules

1.1 The regatta will be governed by the rules and amendments as defined in Notice of Race v3.

1.2 If there is a conflict between languages the English text will take precedence.

2 Notice to Competitors

Notices to competitors will be posted on the official website, sent by e-mail or text message or notice board if available.

In Lerwick the official Notice Board is on the clubs ground floor.

3 Changes to Sailing Instructions

Any change to the sailing instructions will be posted before 0900 on the day it will take effect, except that any change to the schedules will be posted by 2000 on the day before it will take effect.

4 Signals made ashore

4.1 There will be no signals displayed ashore.

5 Race schedule

5.1 Crew briefing

Leg 1 (Ijmuiden – Bergen)	Tuesday	13 th June 1700 LT (tb.a.)
Leg 2 (Bergen – Lerwick)	Tuesday	20 th June 1900 LT (BS - Hjellestad)
Leg 3 (Lerwick – Bergen)	Saturday	24 th June 1330 LT (Lerwick Boating Club)

5.2 Starts:

Leg 1 (Ijmuiden – Bergen)	Wednesday	14 th June 0900 LT
Leg 2 (Bergen – Lerwick)	Wednesday	21 st June 1000 LT
Leg 3 (Lerwick – Bergen)	Sunday	24 th June 1600 LT


6 Class flags

No Class Flags will be applied.

7 Start areas (see supplemental charts)

Leg 1 (Ijmuiden):

Start line will be between the red en green signal lights located at the Ijmuiden Inner breakwaters ('**Start A**'). (see CHART I)

Leg 2 (Bergen): The start will be between 2 orange buoys, or between 1 orange buoy and the starting vessel, if it displays flag signal "M" 
The starting line will be in open water between Tekslo and Marsteinen, outer Korsfjorden. (see CHART III)

Leg 3 (Lerwick): The start line will be between the signal mast on the pier at the Lerwick Boating Club, and the signal light (Oc.WRG) on Maryfield Ferry Terminal (Bressay) (bearing 064°). (see CHART V)

8 The course

8.1 The course consists of three legs:

Leg 1 (Ijmuiden - Bergen):

From start in Ijmuiden, via WP Alfa (postion will be announced) then via WP Gate (see 9. Marks) to the finish W of the island of Herdla at the approximate position N 060:34,75' / E 004:55,7'.

Distance 520 nm.

Leg 2 (Bergen - Lerwick):

Start in the waters between Tekslo and Marsteinen to the finish in Lerwick Harbour. The finish line could be passed either southward (when course is north of Bressay) or northward (when course is south of Bressay)

It is to the crew whether to take the entrance to Lerwick Harbour **north or south of Bressay** (see CHART IV and V).

Distance 194 nm.

Leg 3 (Lerwick - Bergen):

Start in Lerwick harbour south through Bressay Sound, leaving Bard Head (south point of Bressay) to port to the finish at Marsteinen.

Distance 194 nm. (see CHART III)

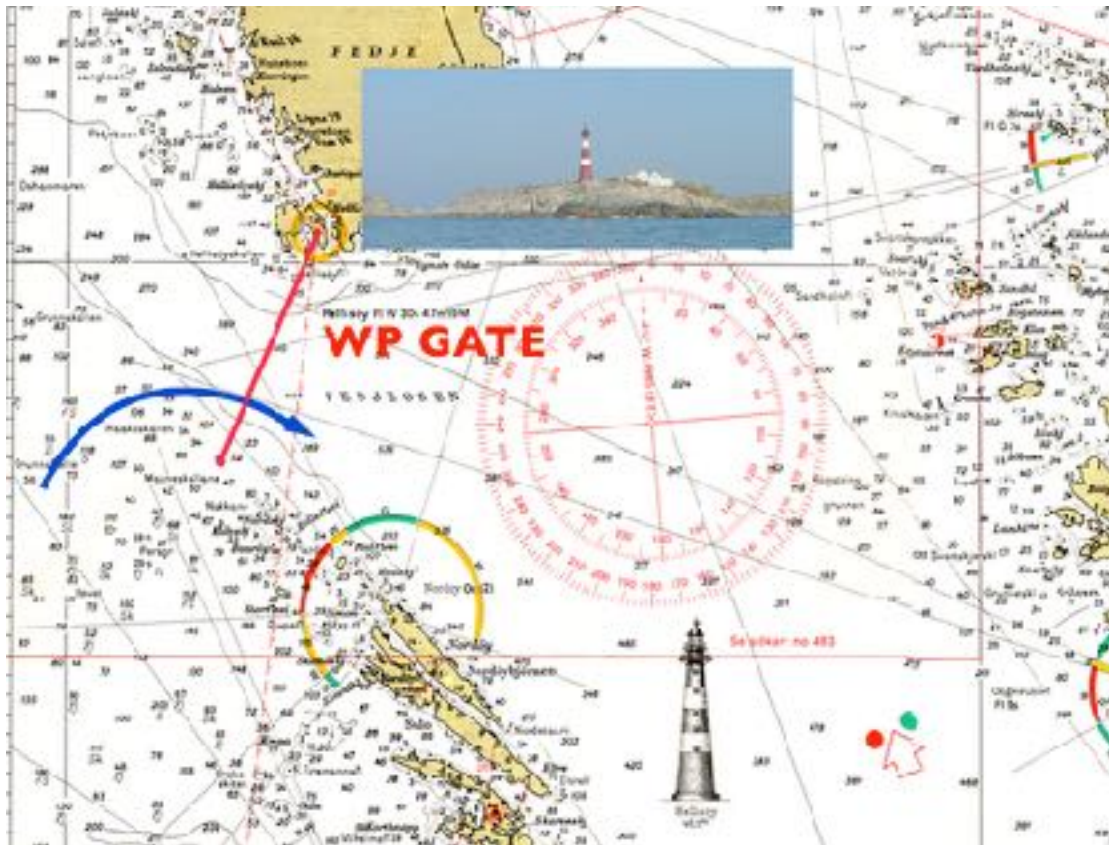
8.2 Course will not be shortened.

9 Marks

9.1 The Rounding marks be:

WP Gate: Competitors should pass WP Gate from W to E.

This 'gate' is located between the Hellisøy Lighthouse at Fedje and N 60:43.900 / E 004:41.70



NOTE:

A maritime Traffic & Pilot Control Station is located on the island of Fedje.

VHF 80 - Call sign: 'FEDJE TRAFFIC'

If you have any concern about the situation at WP Gate (traffic or sea state), we strongly advise you to consult FEDJE TRAFFIC at VHF 16 or 80.


10 Areas that are obstructions


Official regulations concerning obstructed and precaution areas shall be observed at all time.

11 The Start

11.1 All classes start together according to the following procedure.

Note: In Leg 1 (Ijmuiden – Bergen) it might not be possible to display flags.

Flag 'D' 

Flag 'P' 

Races will be started using RRS 26 with an extra attention signal 10 min. before start.

Attention:	S – 10 min.		one sound + VHF
Warning signal	S – 5 min.	Flag "D" displayed	one sound + VHF
Preparatory signal	S – 4 min.	Flag "P" displayed	one sound + VHF
One minute	S – 1 min	Flag "P" removed	one long sound + VHF
Starting signal	S	Flag "D" removed	one sound + VHF

During the starting procedure the starter announces the start on VHF and will do countdowns.

The following VHF channels will be used:

Start Leg 1 Ijmuiden: VHF 74

Start Leg 2 Bergen: VHF 08

Start Leg 3 Lerwick: VHF 08

11.2 IMPORTANT: A scoring penalty of 3 positions will be applied to competitors OCS and competitors breaching the regulations of the Ijmuiden Port Authorities in Leg 1.

A boat crossing the line more than 5 minutes early has not been started.

12 Change of the next leg of the course

12.1 During the race there will be no changes in the course.

13 The Finish

13.1 Locations

Leg 1 (Bergen):

Located at the west side of the island Herdla

West end of finish line is a buoy in position, approx N 060:34,75' / E 004:55,7'

(The position is marked as 'Gjevleskallen' ('devils head') in the official Norwegian Charts)

East end of finish line is a flag on land.

The boat finishes by crossing the line from north to south.

ETA minus 30 min: report yourself to the finish team on VHF 8.

They will listen to **'1000 mile finish line control'**

Leg 1 only: when you cannot make contact by VHF for any reason, please call the numbers:

+47 924 999 77

or
+47 936 870 27

Leg 2 (Lerwick) :

The finish line will be between the signal mast on the pier at the Lerwick Boating Club and the signal light (Oc.WRG) on Maryfield Ferry Terminal (Bressay) (bearing 064°)

The boat finishes by crossing the line from north to south, when course has been north of Bressay, or from south to north, when course has been south of Bressay.

ETA minus 10 min: report yourself to the finish team on **VHF 8**.

They will listen to '**1000 mile finish line control**'.

Leg 3 (Bergen) :

The finish line will be between Marsteinen lighthouse (N 060:07.843 E005:00.551) and Tekslo light (N60:09.289 E005:00.382). A boat finishes by crossing the line from west to east.

ETA minus 10 min: report yourself to the finish team on VHF 8.

They will listen to '**1000 mile finish line control**'

13.2 The finish time shall be recorded by the crew using the Finish Declaration form.

The declaration shall contain date and time for finishing, and information regarding position / passing longitudes 4° E and 0° W. (see 27. Communication)

Deliver declaration within 3 hours after your finish at the Race Office.

14 Penalty system

14.1 The Scoring Penalty, rule 44.3, will apply.

a. Time penalties may be applied for Rule infringements:

- breaching of a rule in RRS Part 2
- not respecting minimum distance to platforms in the North Sea.
- omission of position / passing report as stated in 27.
- omission of, or incorrect, Boat Declaration in accordance with rule 27c

b. Time allowances when going to the aid of other seafarers in distress may be given.

c. Decisions of the jury will be final as provided in rule RSS 70.5

15 Time limits and target times

15.1 Time limits and target times are as follows (in hours after starting signal):

Leg 1: There is no time limit. If you are late, we advise you to go directly to the start of Leg 2 and not to stop at Askøy Marina. If in doubt call the Race Office: **+31 6 19 05 67 66**

Leg 2: 50 hours

Leg 3: 50 hours

15.2 Boats failing to finish within the time limit will be scored Did Not Finish (DNF). This changes RRS 35.

16 Protests and requests for redress

16.1 Protest forms are available at the event office. Crew intending to protest shall announce their display of the protest flag when they call over VHF at the finish.

16.2 Protests shall be delivered to the Race Office within 3 hours after the boat finishes or retiring from the race.

If the finish or arrival after retirement is between 19:00 and 07:00 (LT) the Race Office Letterbox can be used, which is located:

Leg 1: Askøy Seilforening

Leg 2: Lerwick Boating Club, 12A Commercial Street, Lerwick.

Leg 3: Bergens Seilforening, Hjeltestadveien 247, Hjeltestad (60°15,4N, 5°14,4E) (letterbox)

If in doubt: call **+31 6 19 05 67 66**

Leg 2 only: When signal flag "B" is displayed on the pier for Lerwick Boating Club notices have been posted on the official Notice Board at the Race Office in Lerwick, to inform competitors the time and place for hearings in which they are parties or named as witnesses.

It is the competitor's own responsibility to keep them informed about posted protests.

17 Scoring

17.1 The scoring is according the IRC rating system.

The race will be run as a cumulative series of 3 races using a low scoring system, 1 point for first in rank, 2 for second, etc.

Leg 1 (Ijmuiden - Bergen) has a value of 0.5. The other legs have value 1.

In the event of a points tie the position will be decided on the basis of the result in Leg 1.

18 Safety regulations

18.1 Yachts carrying propane are required by Lerwick Harbour to have a gas detector installed.

18.2 A crew retiring from the race shall notify the event committee 2 times by calling: **+31 6 19 05 67 66** or **VHF** (Leg 1 VHF 74, Leg 2 & 3 VHF 08)

1st: as soon as possible after retirement.

2nd: after the boat arrives safely in port.

19 Replacement of crew or equipment

19.1 No substitution of competitors will be allowed without prior written approval of the Race Committee.

A change of crews during the race is allowed if the Race Committee has been informed prior to 1st June 20137

At least one crew member (skipper) shall complete the entire competition.

19.2 Substitution of damaged or lost equipment will not be allowed unless authorized by the Race Committee. Requests for substitution shall be made to the committee at the first reasonable opportunity.

20 Equipment and measurement checks

Safety checks could take place prior the start on June 14th 2017 or after finishing a Leg.

21 Advertising

The race is classified in Category C in accordance with RRS Appendix I – ISAF

Advertising Code. The Organizing Authority will use sponsor advertising. The advertising ensign shall be attached to the yachts aft.

22 Official boats

There will be no official boats.

23 Support boats

There will be no support boats.

24 Trash disposal

Boats shall not put trash in the water.

25 Haul-out restrictions

Boats shall not be hauled out during the regatta except with and according to the terms of prior written permission of the event committee.

26 Diving equipment, etc

N/A

27 Radio Communication

a. Except in an emergency, a boat shall neither make radio transmissions while racing nor receive radio communications not available to all boats. This restriction also applies to mobile telephones.

b. During the starting procedure the starter announces the start on VHF and will do countdowns. The following VHF channels will be used:

Start Leg 1 Ijmuiden: VHF 74

Start Leg 2 Bergen: VHF 08

Start Leg 3 Lerwick: VHF 08

c. Position reports:

Leg 1

Report of the position is not required.

Leg 2 & 3

Due to regulations, yachts on the way to and from Shetland shall give their call sign, boat name and position on the following geographical positions:

Passing	Report to	VHF-channel
004° 00' E	Rogaland Radio Florø Radio	07, 22, 60, 81 21, 66, 79
000° 00' W *	Shetland Coast Guard	16 → 67 **
Lerwick Harbour outer limits *	Lerwick Harbour	12

* When reporting at 000° 00' W and at outer limits for Lerwick harbour, you shall be ready to give the yachts speed and ETA in Lerwick when requested.

** Shetland Coast Guard shall be called on channel 16. When contact is established you will

be asked to change to working channel 67.

If the attempts to report are unsuccessful the boat should contact other competitors nearby and report to them. Notify in the finish declaration scheme the name of the boat you reported to.

Continue to call the radio stations (Rogaland Radio, Florø Radio, Shetland Coast Guard or Lerwick Harbour Trust) until contact is established.

*Note: Request by the website editor: Please send us your reports and stories by e-mail, text message
By e-mail: race@1000mile.org
GSM Text message: +31 6 19 05 67 66*

28 Prizes

All participants will receive a 1000-Mile Doublehanded Race Memento.

There will also be awards for the winners of each leg. The overall prizes (1st, 2nd, 3rd) will be awarded after the final leg at the prize giving in Bergen.

Note: In leg 2 and 3 the teams will also be ranked in the Bergen-Shetland Race Scoring

Prize giving events:

Leg 1 will be held at Askøy Yacht Club.

Leg 2 will be held in Lerwick (Victoria Pier) on Friday night 23st June.

Leg 3 and IRC overall prize will be held in Bergen, probably Tuesday 26th June. (Location to be announced)

29 Disclaimer of liability

Competitors participate in the regatta entirely at their own risk. See rule 4, Decision to participate. The organizing authority will not accept any liability for material damage or personal injury or death sustained in conjunction with or prior to, during, or after the regatta.

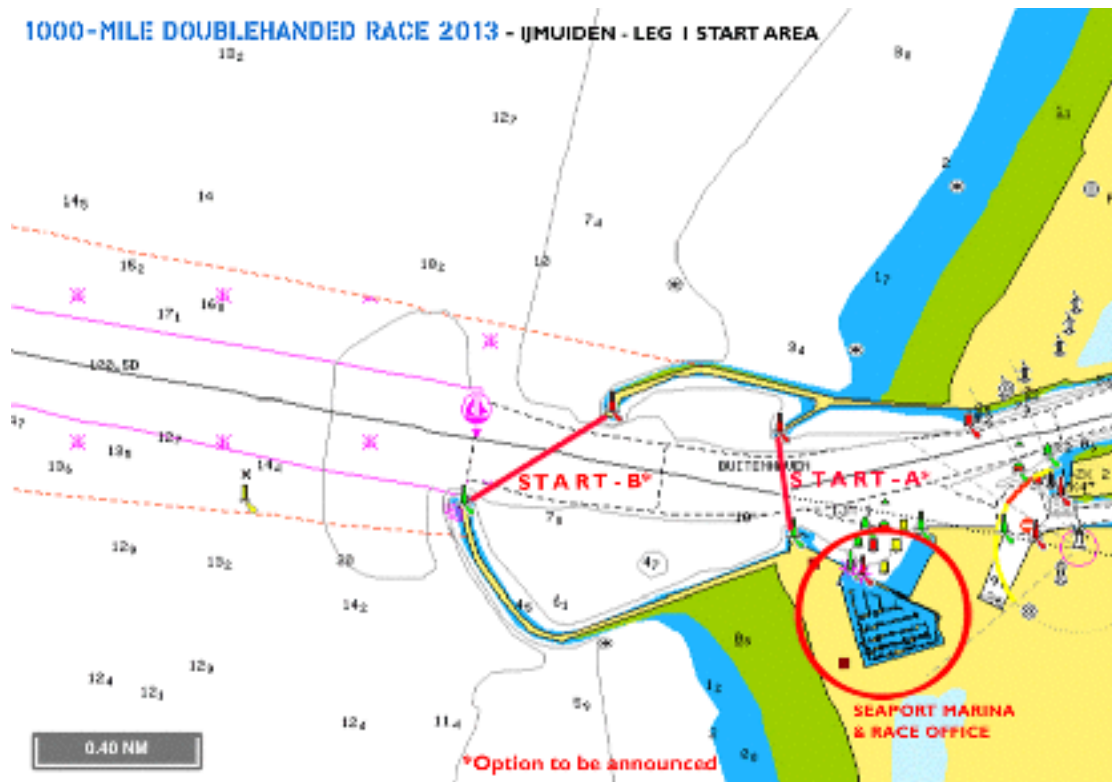
30 Insurance

Each participating boat shall be insured with valid third-party liability insurance with a minimum cover of 3.000.000 EURO per event.

SUPPLEMENTAL CHARTS & INSTRUCTIONS

- I - Start area Leg 1 IJmuiden
- II - Finish area Leg 1 near Askøy
- III - Start area Leg 2 & Finish Leg 3 near Marstein
- IV - Finish Leg 2 & Start Leg 3 at Lerwick
- V – Directions to the Askøy Sailing Club Marina.

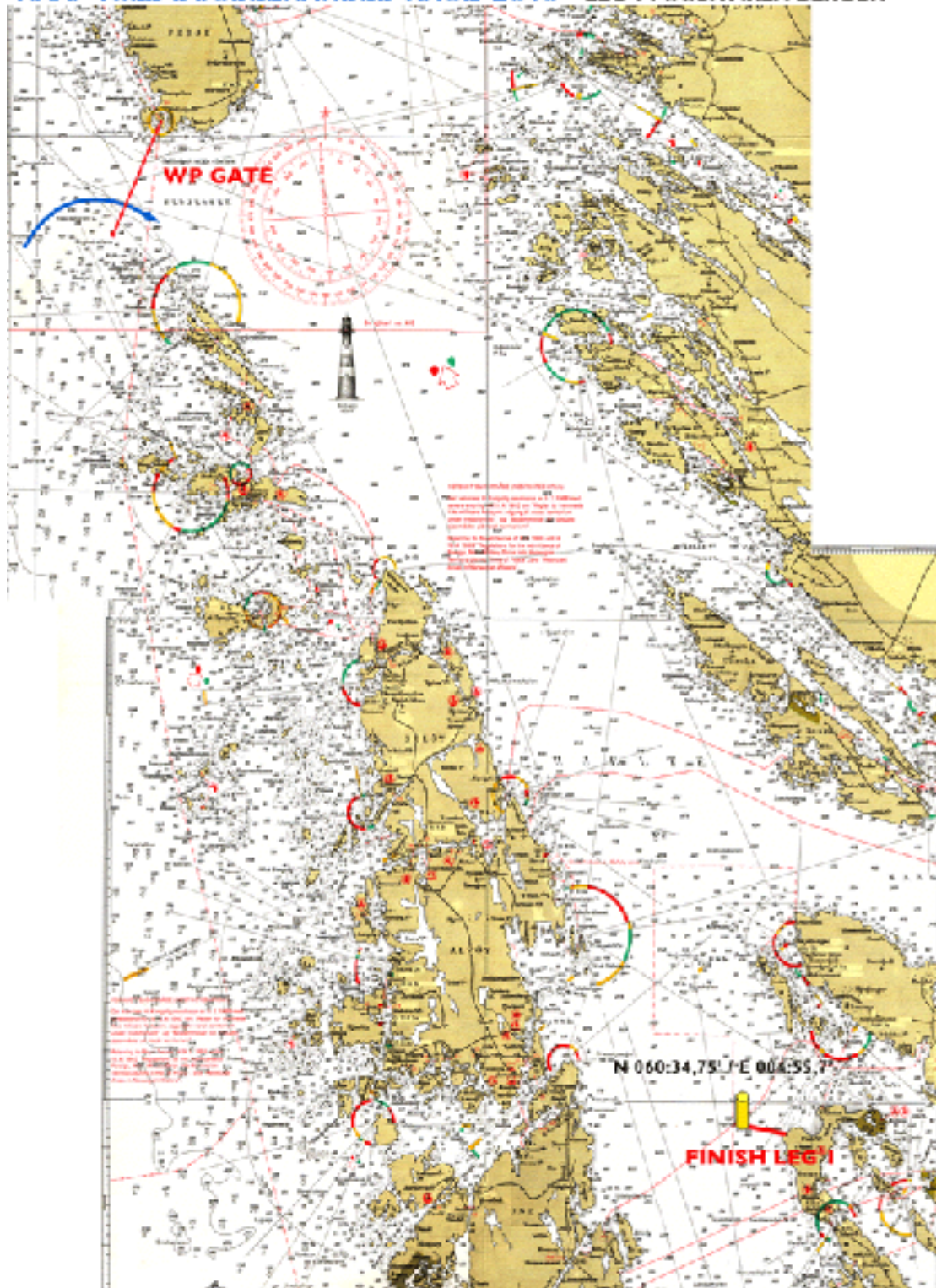
I - Start area Leg 1 IJmuiden



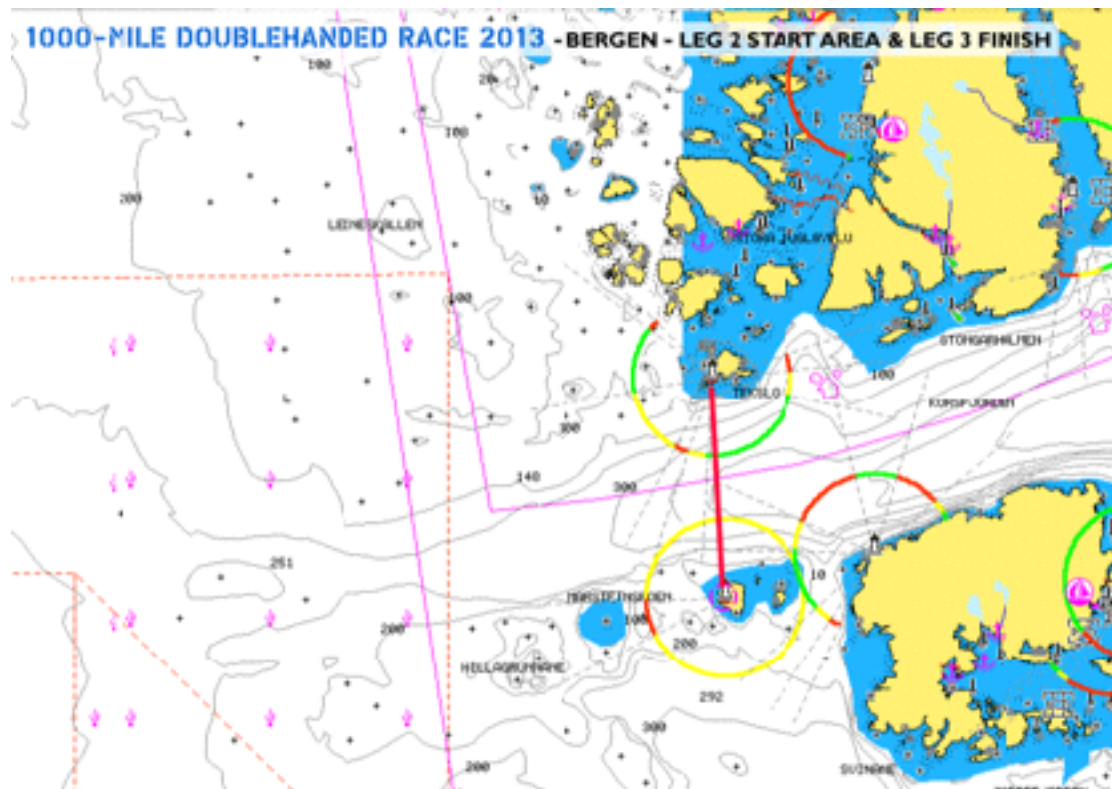
Default START A will be used.

II - Finish area Leg I near Askøy

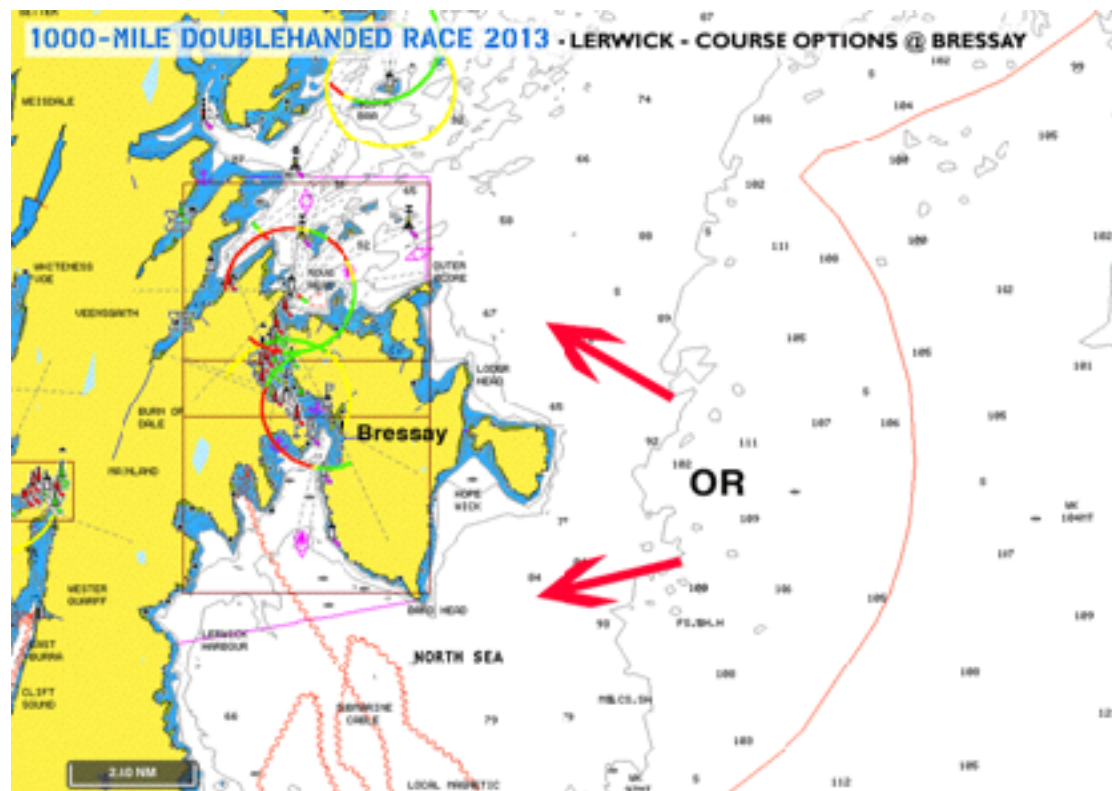
1000-MILE DOUBLEHANDED RACE 2013 - LEG I FINISH AREA BERGEN



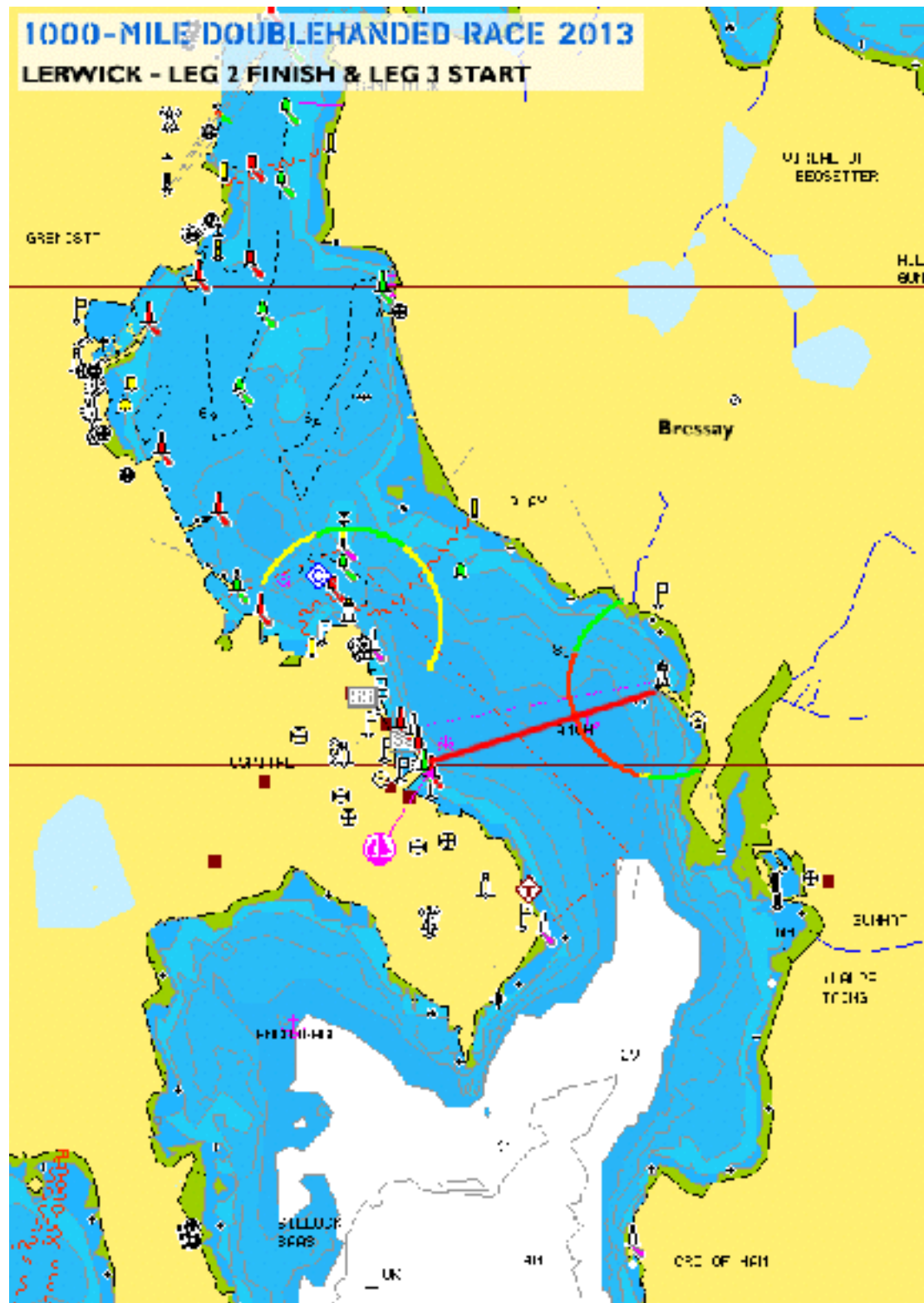
III - Start area Leg 2 & Finish Leg 3 near Marstein



IV - Course options Leg 2 (north or south of Bressay)



V - Finish Leg 2 & Start Leg 3 at Lerwick



VI. Directions to the Askøy Sailing Club Marina.

After Leg I, participating boats are requested to take a berth at the ASKØY Seilsportcenter.

1000-MILE DOUBLEHANDED RACE 2013 - ASKØY SEILSPORTCENTER



The approach of the marina seems complicated, in reality it is quite easy to find though. Under exceptional circumstances, such as bad visibility, assistance can be requested from the finish team of Leg I (they will provide the contact details of the marina)



Amsterdam, Bergen, 04 06 17